

# soft tissue treatment for gum recession



## are you a candidate

Only a trained clinician can determine the best treatment plan. Please ask us to explain the benefits and risks to see if AlloDerm™ RTM is right for you. Patient results may vary.

**BIOHORIZONS®**

**patientconnect™**

### References:

1. AlloDerm: An Effective Alternative to Palatal Donor Tissue for Treatment of Gingival Recession. Allen EP. *Dent Today*. 2006; 25: 48-52.
2. Clinical Evaluation of 3 Techniques to Augment Keratinized Tissue Without Root Coverage. Harris RJ. *J Periodontol* 2001; 72: 932-938.
3. Histologic Evaluation of Autogenous Connective Tissue and Acellular Dermal Matrix Grafts in Humans. Cummings LC, Kaldahl WB, Allen EP. *J Periodontol* 2005; 76: 178-186.

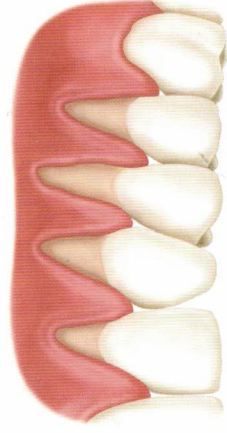
AlloDerm™ and AlloDerm GBR™ are trademarks of LifeCell corporation, an Allergan affiliate.

©BioHorizons. All Rights Reserved.  
MLD101 REVE JAN 2018

## gum recession

Healthy gum tissue protects your teeth from periodontal disease and sensitivity while giving you a great smile. Routine dental check-ups along with proper brushing are essential for maintaining healthy gums but some patients may require treatment.

Gum recession is sometimes treated by retrieving soft tissue from the roof (palate) of your mouth. However, removing a section of your palate creates pain and discomfort that may not be necessary.



receding gums

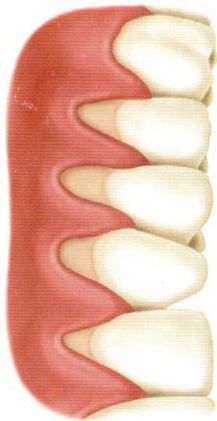
## AlloDerm™ Regenerative Tissue Matrix (RTM)

AlloDerm™ RTM allows us to restore your smile without retrieving tissue from the palate. AlloDerm™ RTM can provide a natural outcome and is an alternative to using your own tissue.<sup>1</sup>

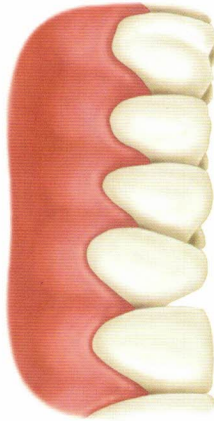
## why treat gum recession

Aggressive tooth brushing and periodontal disease are two primary causes for recession and can lead to the following:

- unattractive smile
- root sensitivity
- loss of supporting bone
- tooth decay
- plaque build-up<sup>2</sup>
- risk of future recession<sup>2</sup>



gum recession leads to complications beyond esthetics



natural gum line restored



## what is AlloDerm™ RTM

AlloDerm™ RTM is donated tissue that has been processed to remove cells creating a regenerative tissue matrix. Its success in soft tissue treatments is documented by more than 10 years of dental applications and research.



## potential benefits of AlloDerm™ RTM

Thousands of clinicians and patients have made AlloDerm™ RTM their choice for gum recession due to the following advantages:

- excellent safety profile and predictable alternative to your own tissue<sup>1</sup>
- offers natural outcome<sup>1</sup>
- avoids pain and potential complications associated with removing palatal tissue<sup>3</sup>

## before



## AlloDerm™ RTM safety

AlloDerm™ RTM is widely used in the medical and dental fields for plastic and reconstructive surgery.

Since its introduction in 1994, over one million AlloDerm™ RTM grafts have been successfully placed in various applications.

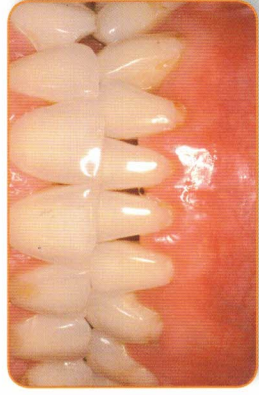
Donor tissue is extensively screened and tested and then undergoes proprietary processing to ensure that AlloDerm™ RTM is ready for use in patients.

## what to expect

The site may be covered with a dressing material. Recovery instructions can vary for each patient. Instructions may include but are not limited to:

- limit tooth brushing near site
- avoid chewing near site
- take medications as prescribed:
  - antibiotics
  - pain medication
  - mouth rinse

## after



Clinical images courtesy of  
John Paul Gallardo, DDS, PA, Miami